



Terian Estate

AFFORDABLE HOUSING



AFFORDABLE HOUSING IN KITENGELA

Call : **+254 728 31 31 31**

AVG ADDED
VALUE
GROUP
Exceeding Expectations.

TERIAN HOMES

Terian Estate is a premium affordable housing project located 10 minutes away from Kitengela Town . It is a mix of both commercial & residential units comprising of 2 & 3 bedroom apartments.

Express your individuality at Terrian Homes Estate!

APARTMENTS FOR SALE



1 bedroom- 45 sqm

Ksh. 2.2M

AMENITIES

- Shopping complex
- Kindergarten
- Children's playground
- Ample parking spaces
- Perimeter wall
- Lush green garden
- Borehole

TERIAN ESTATE

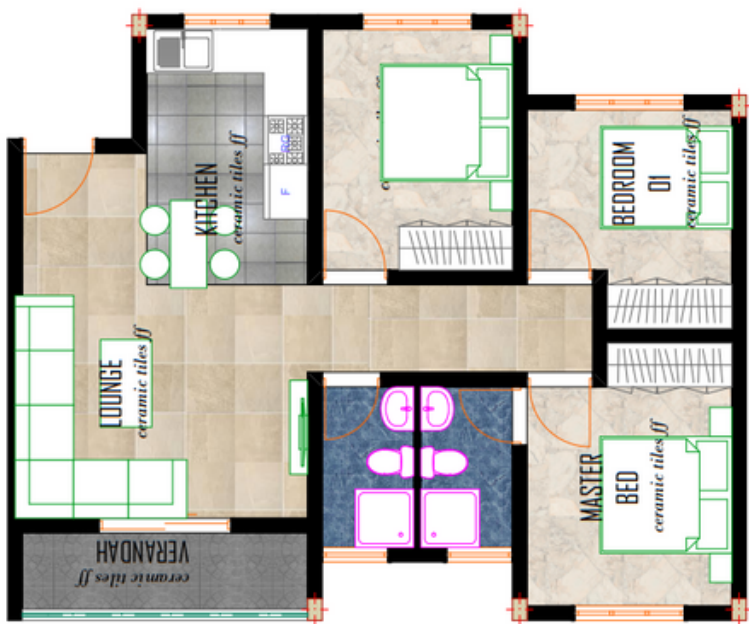
It offers:

- Great location adjacent to the Nairobi–Namanga Highway
- Population density low
- Quiet and tranquil area
- Affordable modern living



2 bedroom- 65 sqm

Ksh. 3.3M



3 bedroom- 85 sqm

Ksh. 4.4M

Progress...



PAYMENT PLAN

1 Bed- 45 sqm	DEPOSIT	MONTHLY INSTALLMENT (12 months)
1. 20% deposit- 2.2m/unit	Ksh. 440,000	Ksh. 146,667
2. 50% deposit- 2.1m/unit	Ksh. 1,050,000	Ksh. 87,500
3. 100% deposit- 2.0m/unit	Ksh. 2,000,00	-

Mortgage Financing accepted!

PAYMENT PLAN

2 Bed- 65 sqm	DEPOSIT	MONTHLY INSTALLMENT (12 months)
1. 20% deposit- 3.3m/unit	Ksh. 660,000	Ksh. 220,000
2. 50% deposit- 3.1m/unit	Ksh. 1,550,000	Ksh. 129,167
3. 100% deposit- 3.0m/unit	Ksh. 3,000,00	-

Mortgage Financing accepted!

PAYMENT PLAN

3 bed- 85 SQM	DEPOSIT	MONTHLY INSTALLMENT (12 months)
1. 20% deposit- 4.4m/unit	Ksh. 880,000	Ksh. 293,333
2. 50% deposit- 4.2m/unit	Ksh. 2,100,000	Ksh. 175,000
3. 100% deposit- 4.0m/unit	Ksh. 4,000,00	-

Mortgage Financing accepted!



Terian Estate

AFFORDABLE HOUSING



CALL US ON

+254 728 31 31 31

www.addedvaluegroup.co