



*Tertan Estate*

AFFORDABLE HOUSING



## AFFORDABLE HOUSING IN KITENGELA

Call/Whatsapp: +254 728 31 31 31

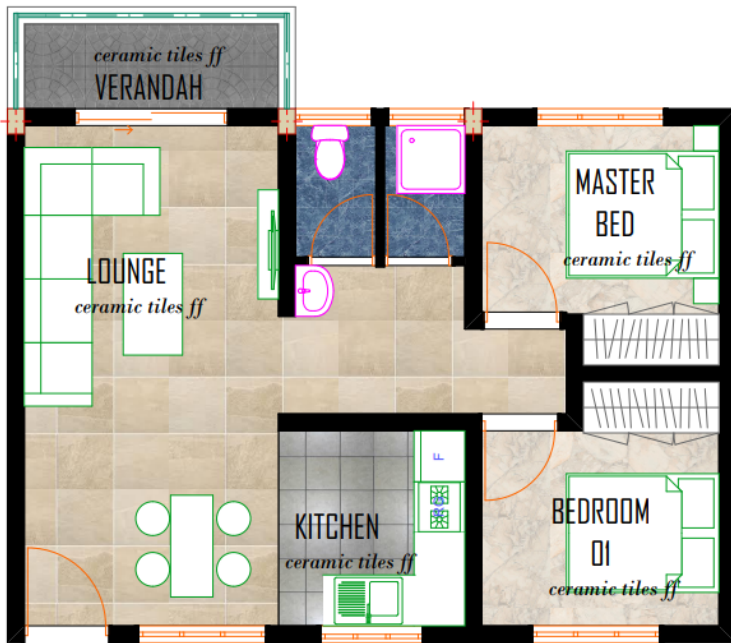
Email: [info@addedvaluegroup.co](mailto:info@addedvaluegroup.co)

**AVG** ADDED  
VALUE  
GROUP  
Exceeding Expectations.

# TERIAN ESTATE

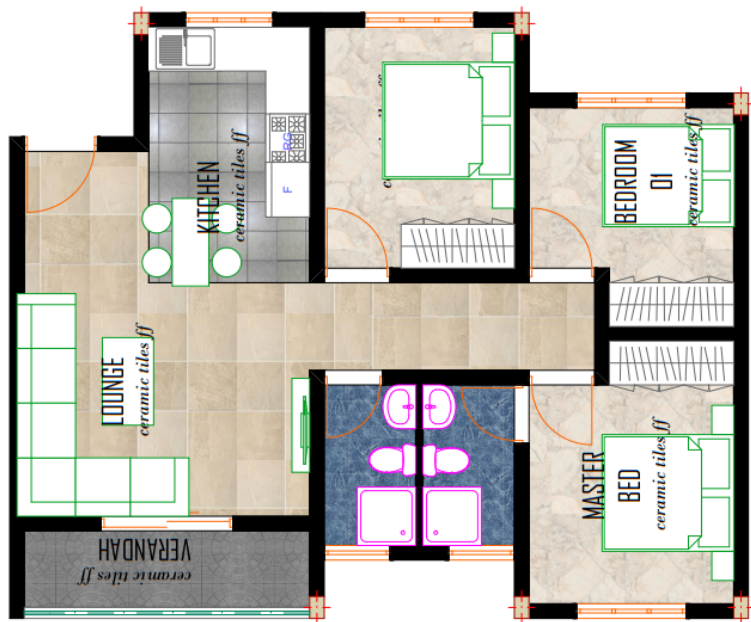
Terrian Estate is a premium affordable housing project located 10 minutes away from Kitengela Town . It is a mix of both commercial & residential units comprising of 2 & 3 bedroom apartments.

Express your individuality at Terrian Homes Estate!



**2 bedroom- 65 sqm**

**Ksh. 2.8M**



**3 bedroom- 85 sqm**

**Ksh. 3.7M**

## AMENITIES:

- Shopping complex
- Kindergarten
- Children's playground
- Ample parking spaces
- Perimeter wall
- Lush green garden
- Borehole

# Payment Plan

30% deposit

Balance within 12 months



# **PAYMENT PLAN**

	<b>2 BEDROOM (Ksh. 2.7M)</b>	<b>3 BEDROOM (Ksh. 3.8 M)</b>
Deposit 30%	Ksh. 810,000	Ksh. 1,140,000
Monthly installments for 12 months	Ksh. 157,500	Ksh.221,667

***Mortgage Financing accepted!***



*Terian Estate*

AFFORDABLE HOUSING



Exceeding **Expectations.**

**Call +254 728 31 31 31**



**@ addedvaluegroup**



**www.addedvaluegroup.co**